

Fig – 1 Index Map of Orissa State with River Basins



Fig – 3 Hirakud Project Command Area

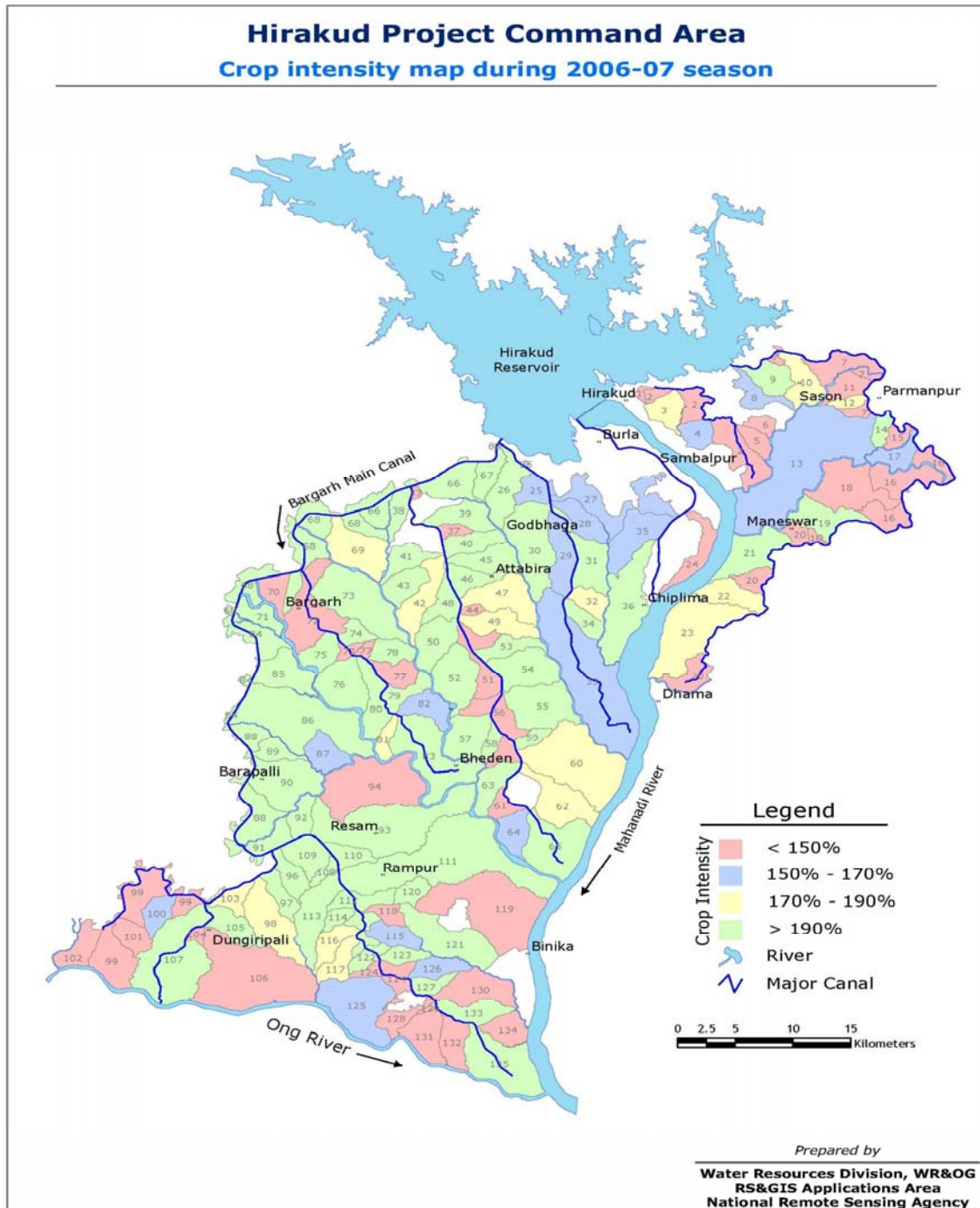


FIG - 4 RULE CURVE OF 1988

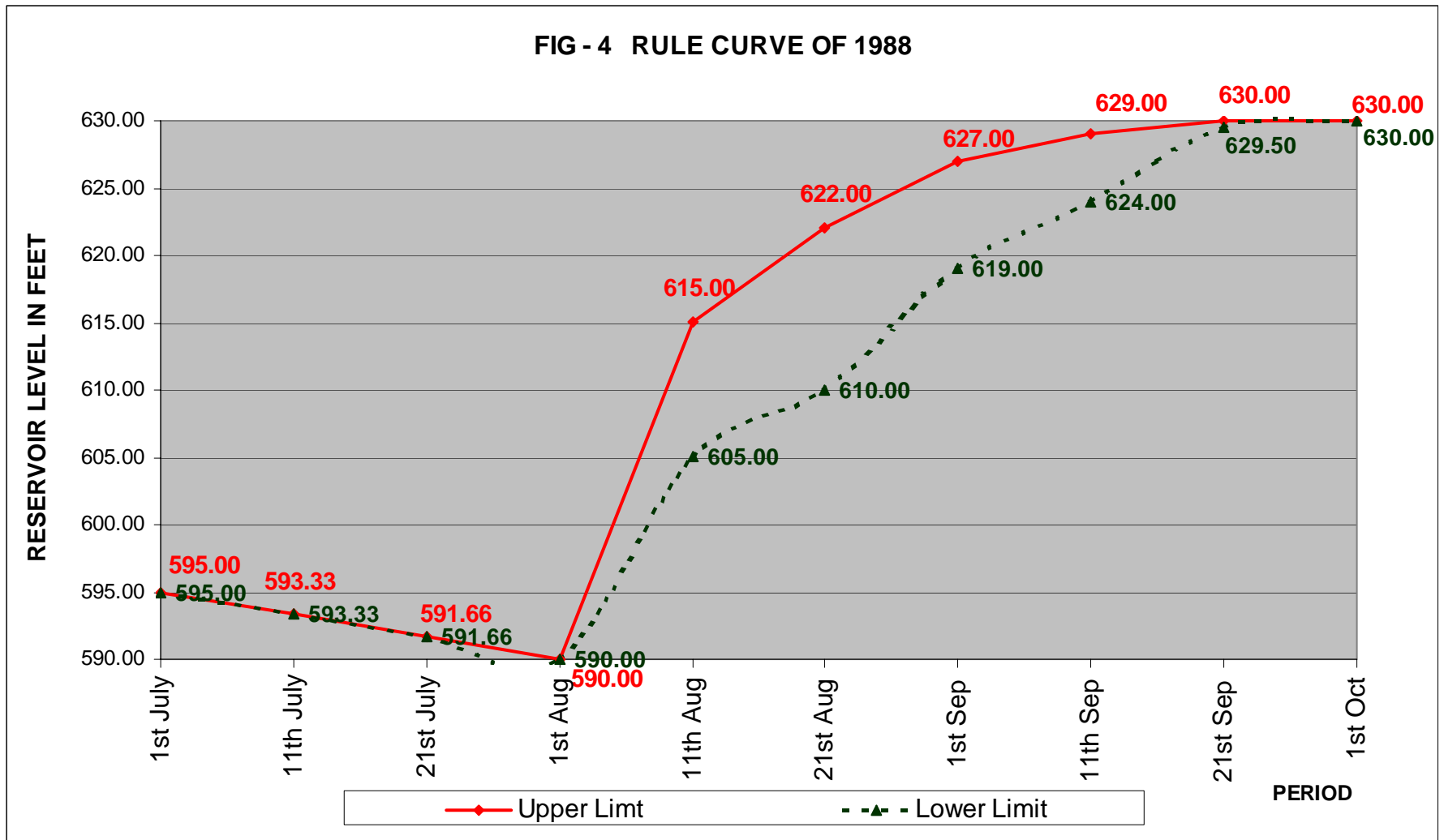


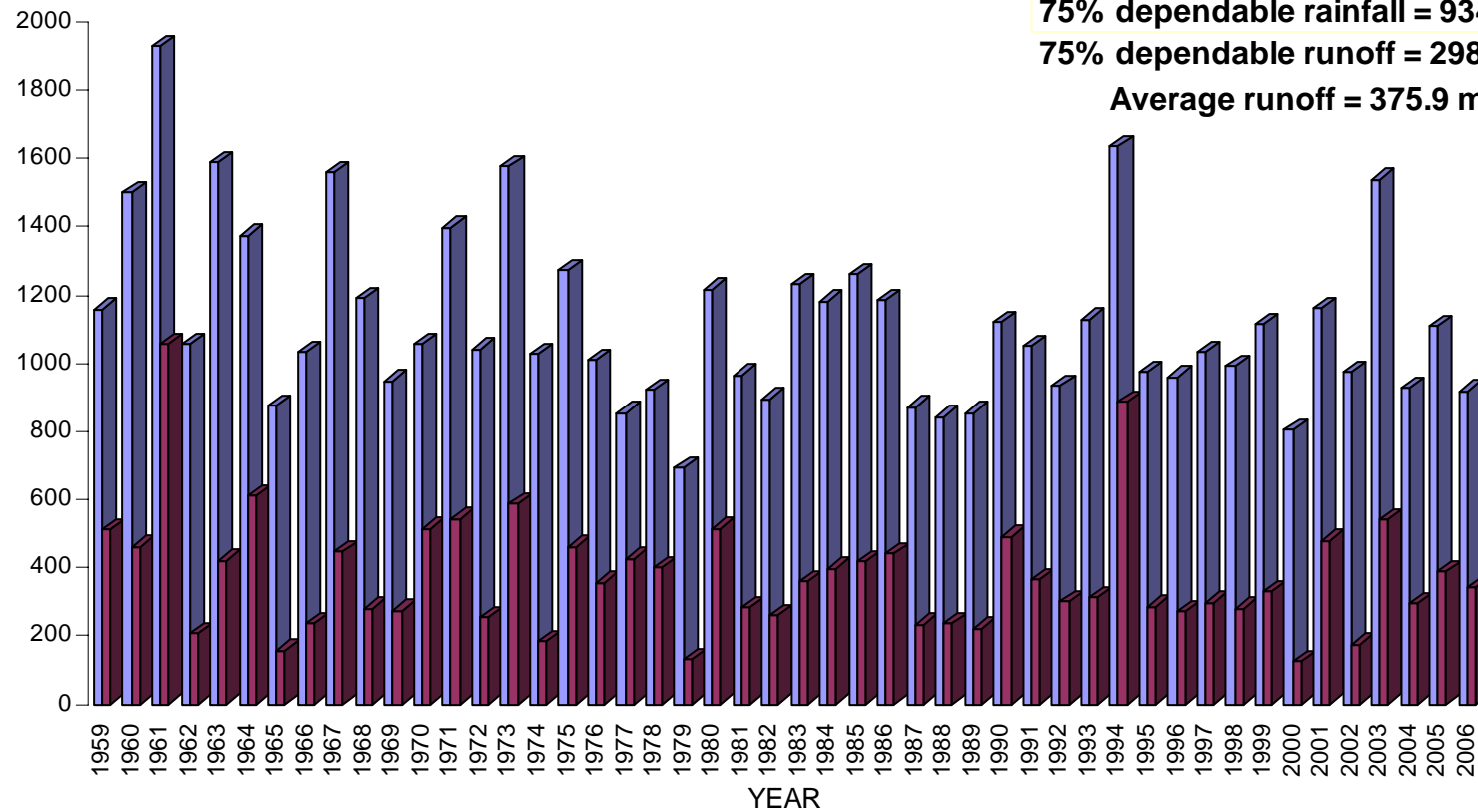
FIG. - 5 YEARWISE TOTAL MONSOON RAINFALL WITH MONSOON RUNOFF OF HIRAKUD CATCHMENT(1959-2006)

Average rainfall = 1122.3 mm

75% dependable rainfall = 934.3mm

75% dependable runoff = 298.5 mm

Average runoff = 375.9 mm



■ Monsoon rainfall in mm ■ Monsoon runoff in mm

FIG. - 6 NON-MONSOON RUNOFF (MAF) OCTOBER TO MAY FROM 1958-2006

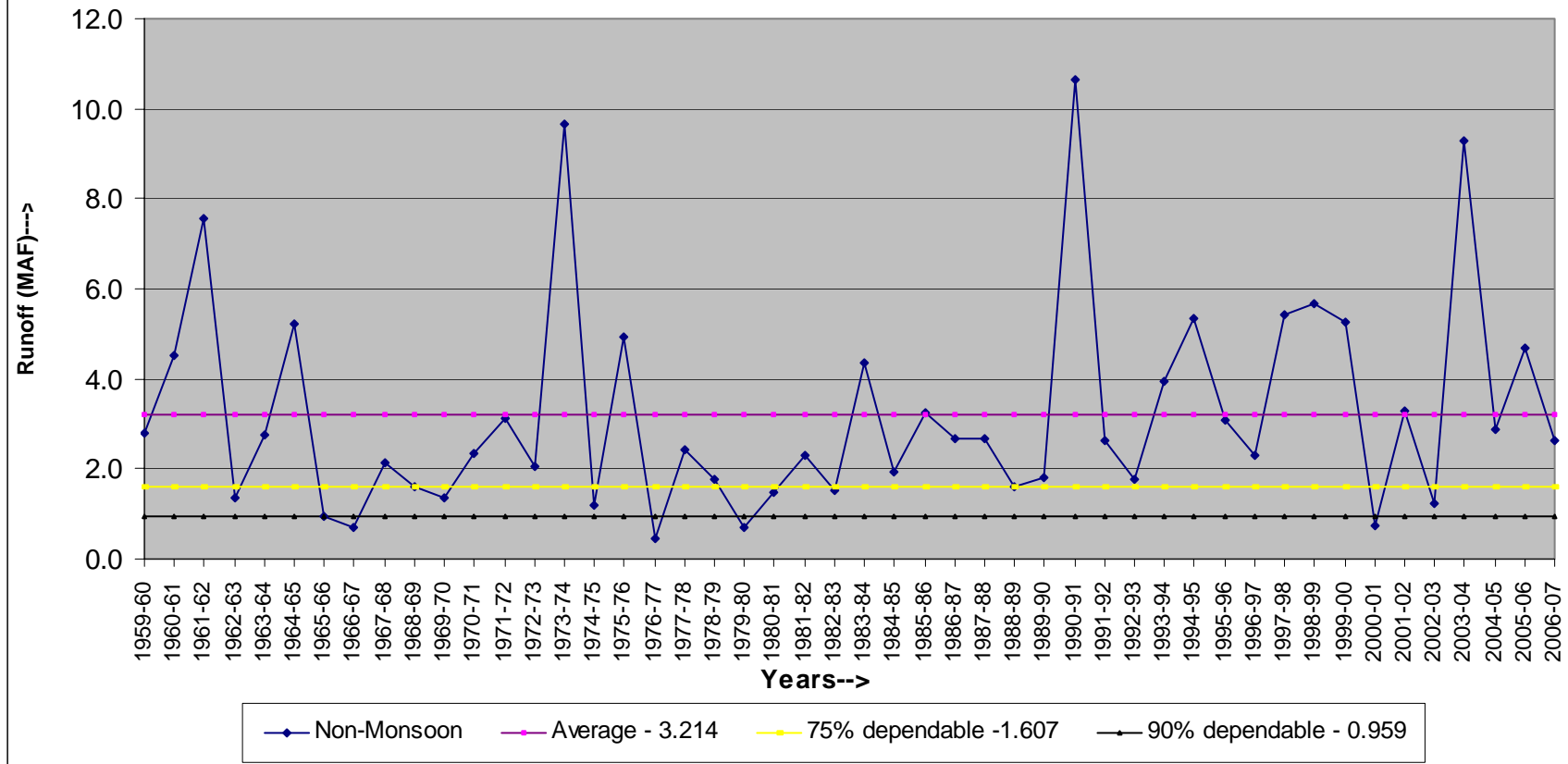
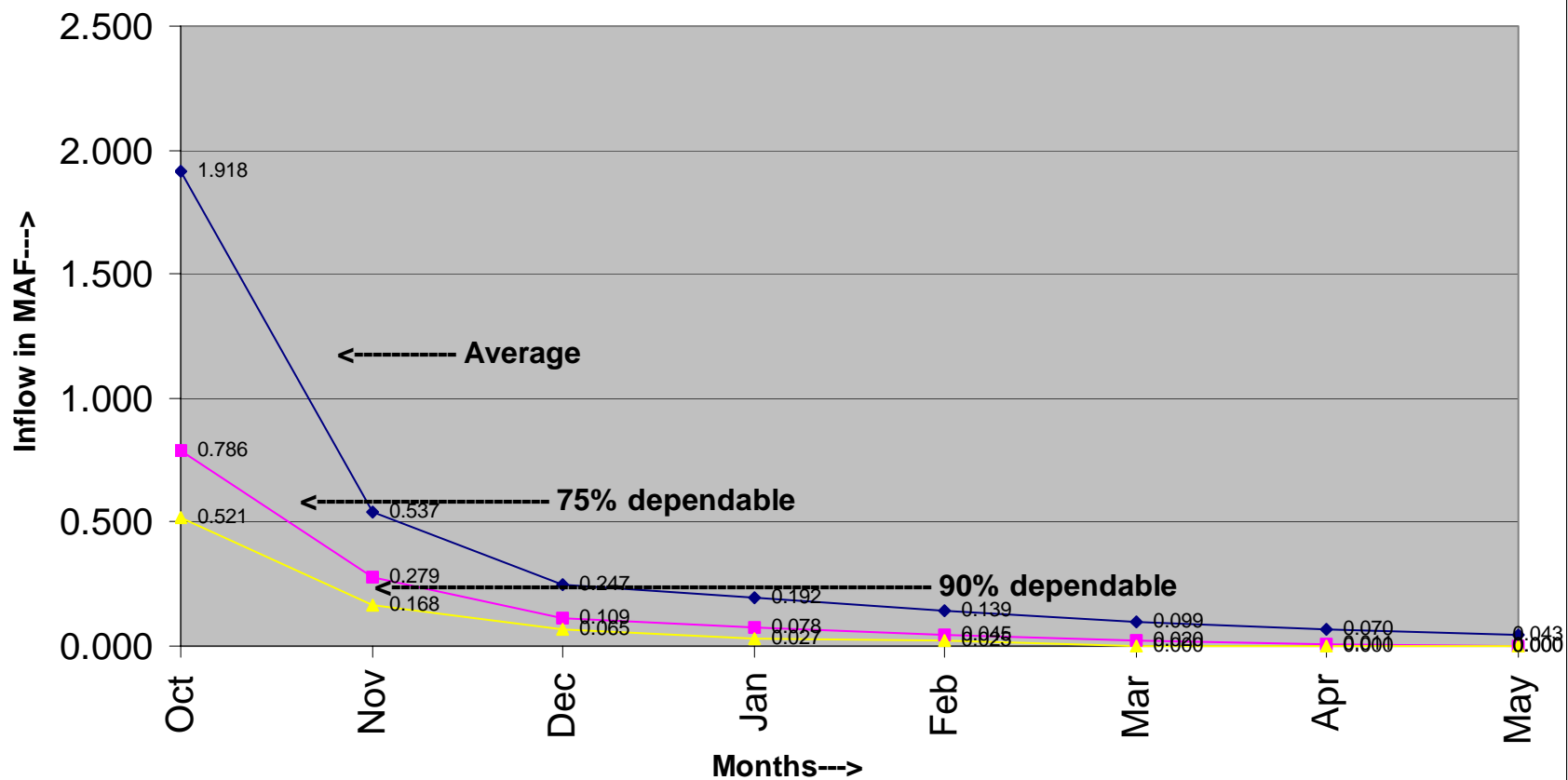
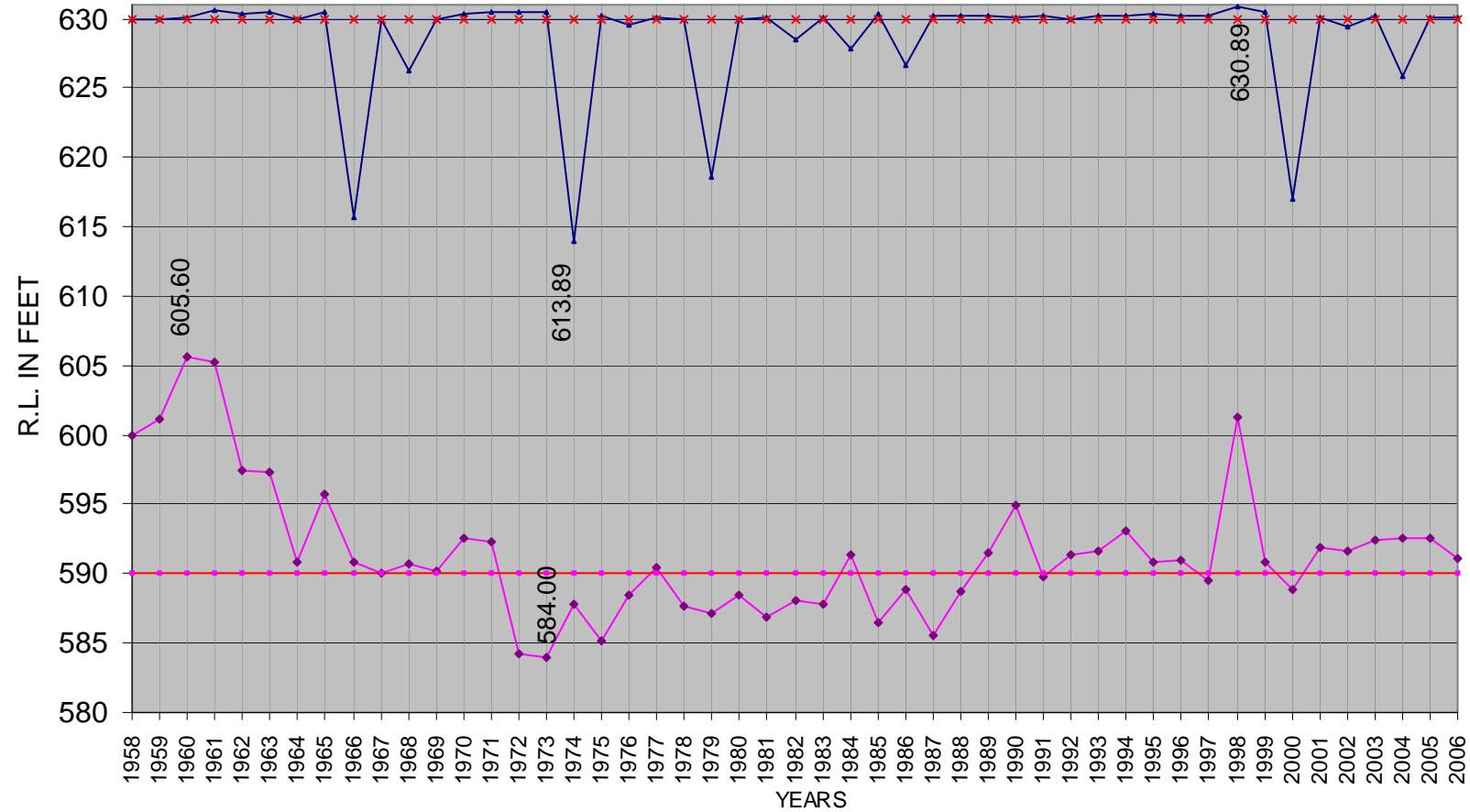


FIG - 7 NON-MONSOON INFLOW FOR VARIOUS DEPENDABILITY (1959 - 2006)



◆ "Average" ■ "75% dependable" ▲ "90% dependable"

FIG. - 8 YEARWISE MAXIMUM & MINIMUM RESERVOIR LEVEL WITH RESPECT TO F.R.L. & D.S.L. (1958-2006)



◆ MINIMUM R.L.
 — D.S.L.
 ▲ MAXIMUM R.L.
 * F.R.L.

Fig. - 9 Elevation & Capacity Curve of Hirakud Reservoir from different Survey

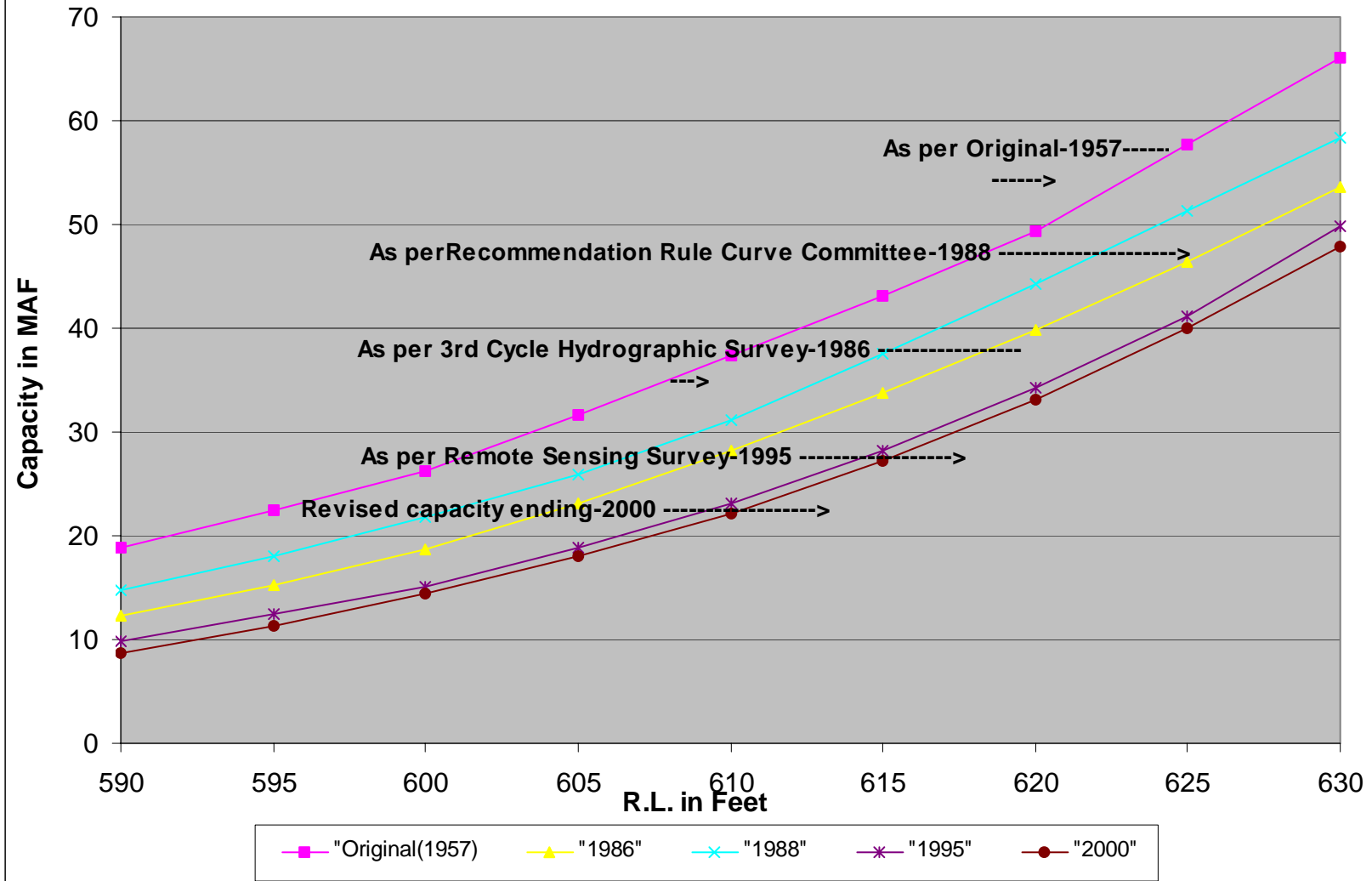
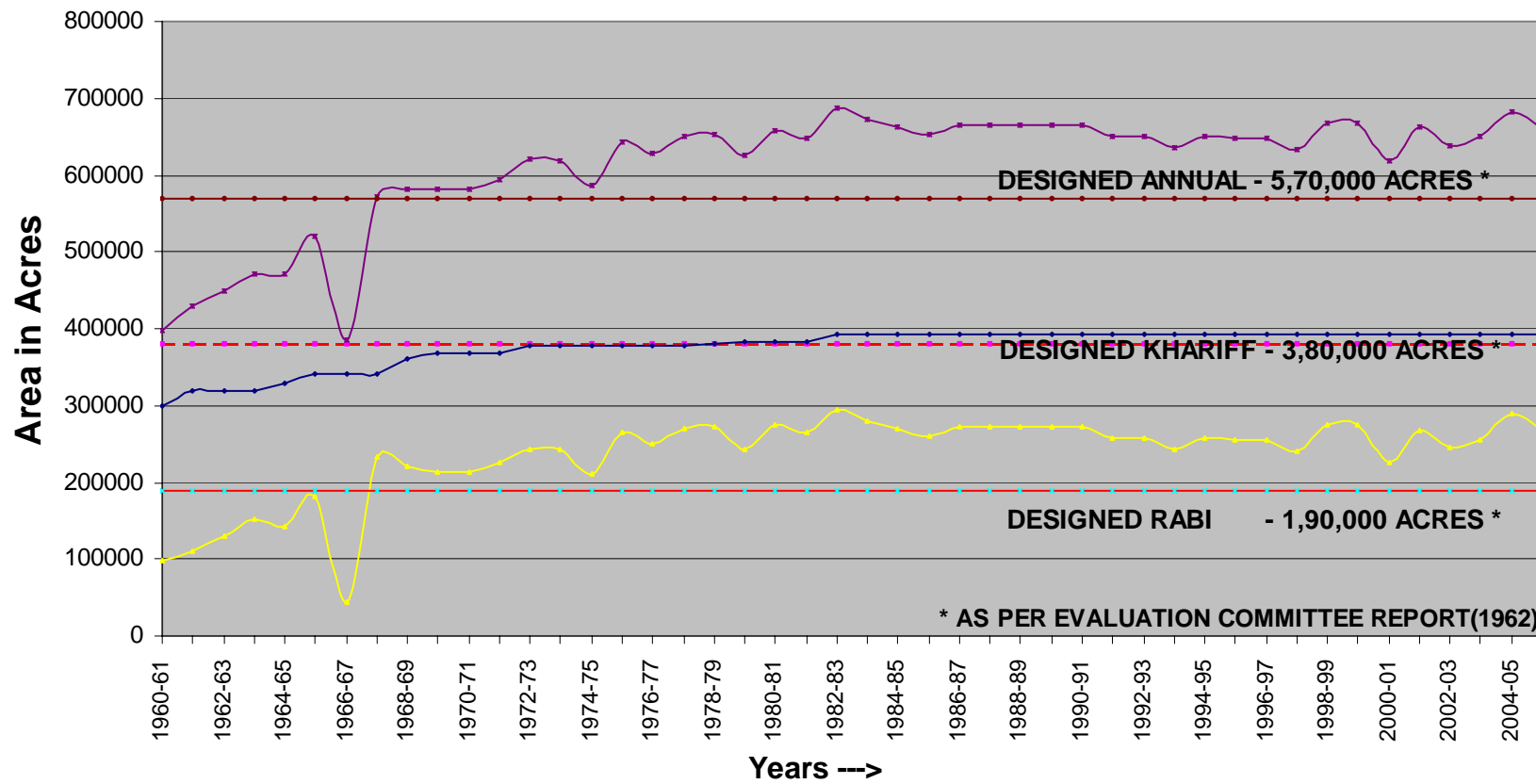


Fig - 10 Progressive Development of Irrigation (in Acres) in Hirakud Command (1960-61 to 2005-06)



* AS PER EVALUATION COMMITTEE REPORT(1962)

FIG - 11 ACTUAL WATER SUPPLIED FOR IRRIGATION (1958-07)

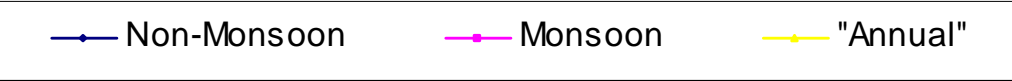
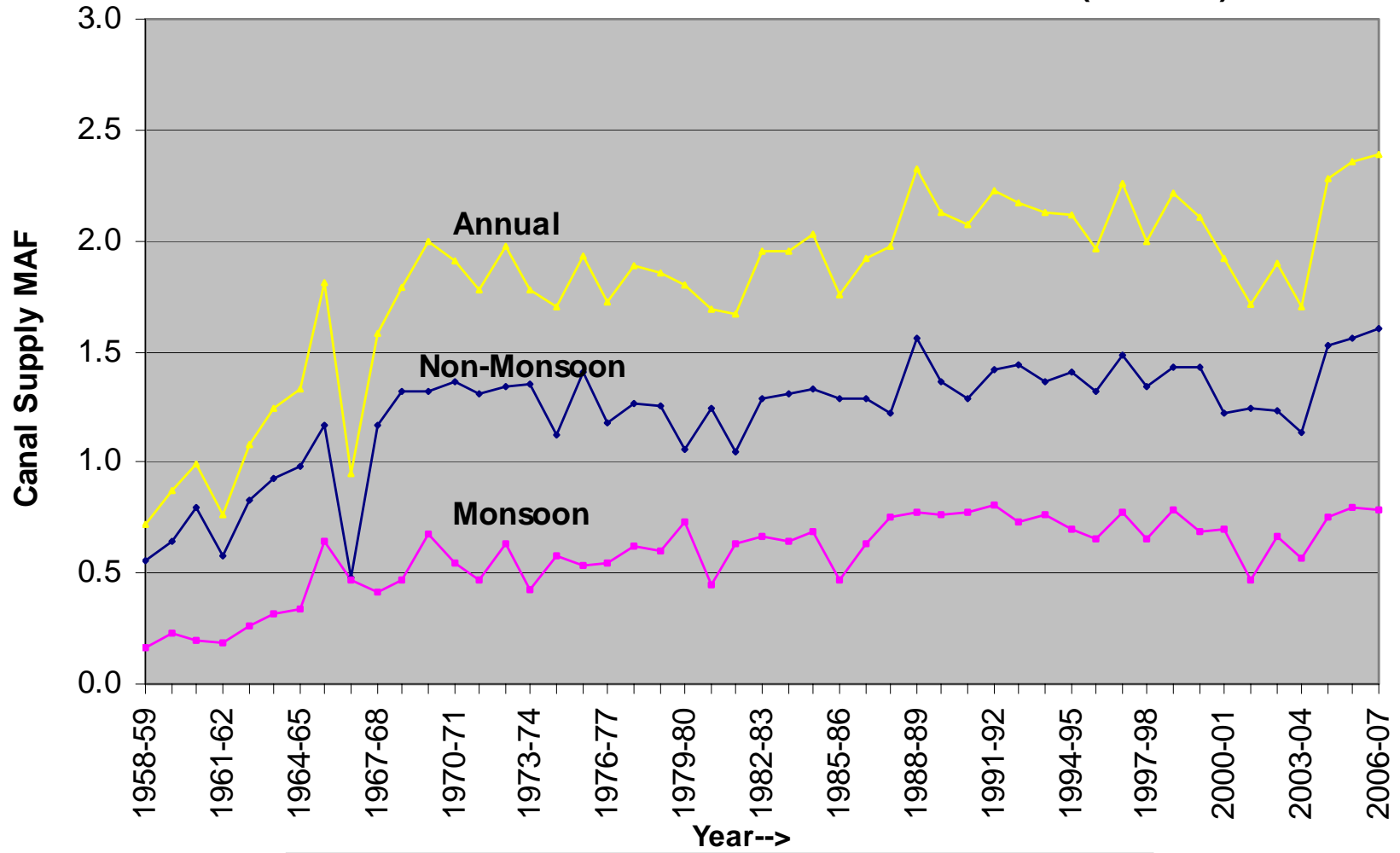
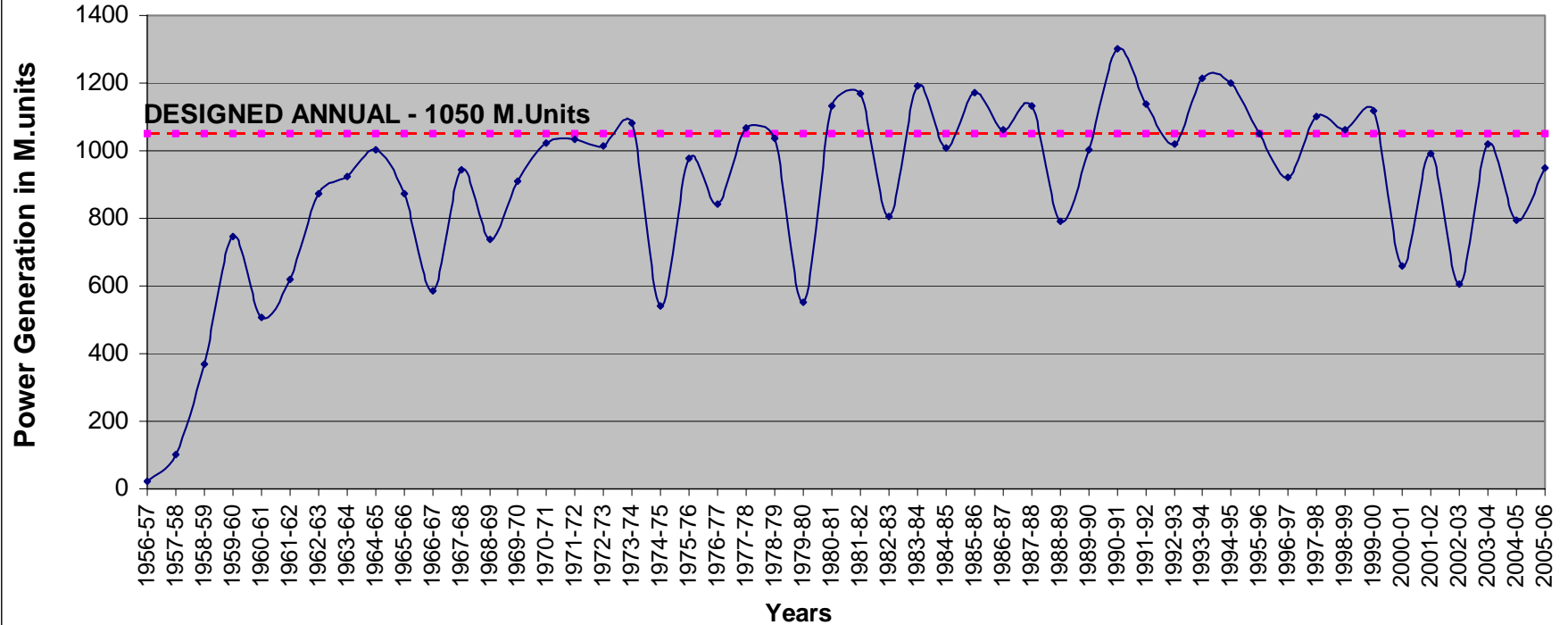


Fig. - 12 Power Generation from Hirakud Dam Project (1956-57 to 2005-06)



AS PER EVALUATION COMMITTEE REPORT(1962), DESIGNED DAILY AV.GENERATION=120MW